

## GSM DCS WCDMA Triple Band Repeater

Gain 70dB, Output 20dBm

### Overview:

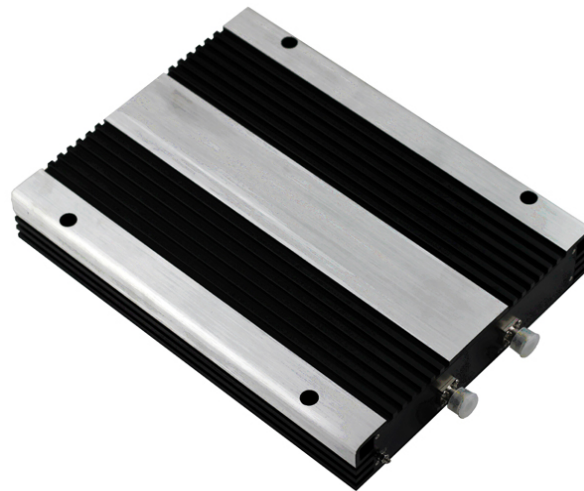
CRF-GDW20-S wireless Pico Repeater is a fast and cost effective solution widely deployed to provide coverage improvement for in-building solution, especially for areas without optical access and emergency coverage, eg. house, apartment or office area 500-1800sq.m.

CRF-GDW20-S wireless Pico Repeater receives and amplifies signal from donor BTS. It is a bi-directional amplifier transmitting signal to coverage area, bringing coverage to the shadow or blind area in rural and urban buildings where the BTS footprints can't reach.

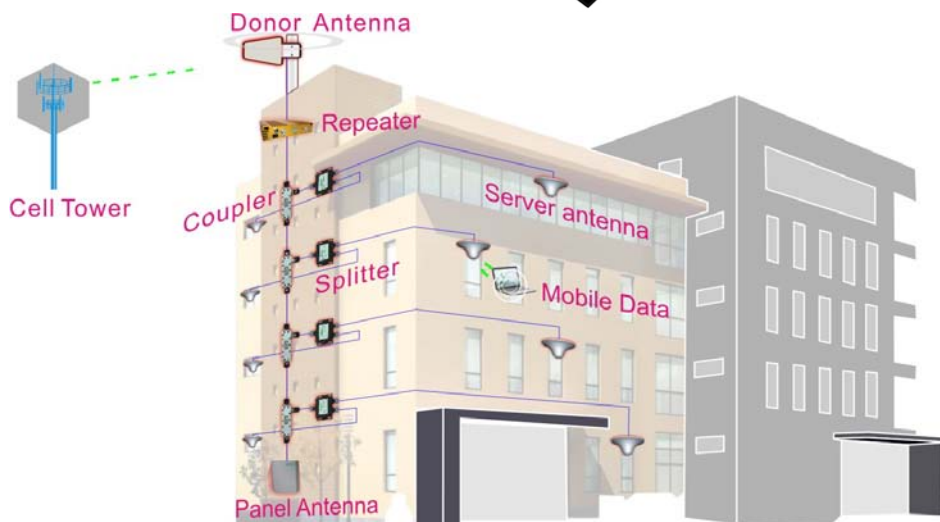
### Features:

1. Elegant and Compact design.
2. Built-in AGC and ALC circuits, which can automatically control the gain of the repeater depending upon the strength of input signals.
3. 31dB MGC(Manual gain control) 5dB one step available for both uplink and downlink to adjust the gain value for proper coverage during installation or maintenance.
4. Auto shut off function available for both uplink and downlink to avoid deep self-oscillations from jamming the towers, saving your trouble from operators.
5. Low power consumption – less than 20W only.

### Product Photos:



### Applications:



**Specification:**

Electrical specification		Uplink	Downlink
Frequency Range	GSM900	890~ 915MHz	935 ~ 960 MHz
	DCS1800	1720 ~ 1785 MHz	1815 ~ 1880 MHz
	WCDMA	1920 ~ 1980 MHz	2110 ~ 2170 MHz
Max .Gain		≥ 65dB	≥ 68dB
Max .Output Power		≥ 15dBm	≥ 20dBm
Band width (-3dB)		Wide Band	
MGC ( Step Attenuation )		≥ 31dB / 1dB step	
Automatic Level Control		≥ 15dB,auto shut off 31dB after 15dB	
Gain Flatness		≤6dB(P-P)	
Noise Figure		≤6dB	
VSWR		≤1.8	
Group Delay		≤5μs	
Frequency stability		≤0.01ppm	
Spurious Emission & Output inter-modulation		GSM Meet ETSI TS 151 026 V6.1.0	
		WCDMA Meet 3GPP TS 25.143 ( V 6.2.0 )	
		CDMA Meet IS95 & CDMA2000	
<b>LED Alarm</b>		<b>Standard</b>	
Power LED		Green light when power on.	
ALC LED		Orange @ ALC 1~5dB, Red @ ALC 15dB~20dB,	
		LED off after 5 second red color	
<b>Mechanical Specifications</b>		<b>Standard</b>	
I /O Port		N-Female	
Impedance		50 ohm	
Operating Temperature		-25°C~+55°C	
Environment Conditions		IP40	
Dimensions		250x330x52mm	
Weight		≤ 4.5Kg	
Power Supply		Input AC90~264V,output DC10V / 7A	