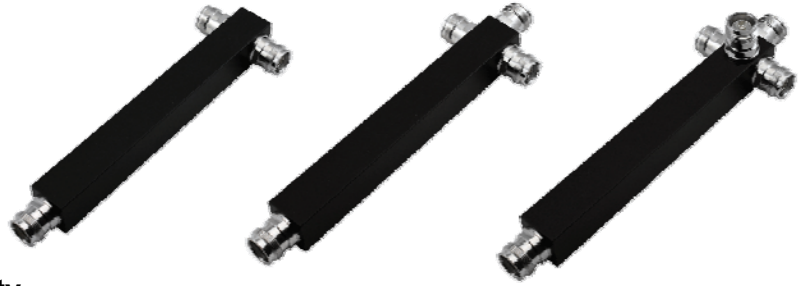


Power Splitter, 698-4000 MHz

Part No.: S-X-0740-43Fi

Main Features

- Multiple-Band Frequency Ranges
- High Power Rating 300 Watt
- Low PIM, Low VSWR
- High Quality Cavity Type, High Reliability



PN.

Product Type	2-way Splitter	3-way Splitter	4-way Splitter
Model Number	S-2-0740-43Fi	S-3-0740-43Fi	S-4-0740-43Fi

Electrical Specifications

Frequency Range		698 - 4000 MHz	
Insertion Loss(dB)	≤ 3.1	≤ 4.8	≤ 6.1
In-band Ripple(dB)	± 0.3	± 0.3	± 0.3
Return Loss / VSWR		≤ -19 dB / 1.25	
PIM (IM3)		≤ -155 dBc @ 2 x 43 dBm	
Power Handling		300 W	
Impedance		50 Ω	

Environmental Specifications

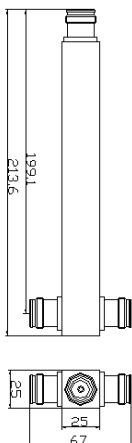
Applied Environment	Outdoor or Indoor, IP 65
Relative Humidity	5 to 95%
Operating Temperature	-20 °C to +65 °C
Storage Temperature	-40 °C to +85 °C

Mechanical Specifications

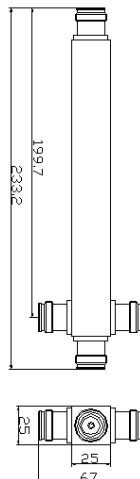
Connector Type	4.3-10 Female		
Materials	Cavity: Aluminum; Connector: Copper		
Processing	Silver plated inner conductor		
Dimensions	213.6 x 67 x 25 mm	233.2 x 67 x 25 mm	233.2 x 67 x 46 mm
Net Weight	0.37 Kg	0.47 Kg	0.53 Kg

Outline Drawing

2-way Splitter



3-way Splitter



4-way Splitter

